

CONTENTS

PNEUMATICMECHANISM	2	FRONT SUSPENSIO SYSTEM	22
CYLINDER CAP	3	FRONT WHEEL SYSTEM	23
CRANK CONNECTING ROD MECHANISM	5	STEERING VERTICALPOLE	24
CRANKCASE BODY PART	6	STEERING BAR OPERATION SYSTEM	25
CLUTCH	8	OPERATION HANDLE BAR	26
GEAR SHIFT OPERATION DEVICE	10	REAR WHEEL FORK ASSY	27
REVERSE LEVER DEVICE	11	REAR DRIVING GEAR BOX ASSY	28
ONTPUT DEVICE	12	REAR WHEEL SYSTEM	29
CHANGE SPEED GEAR DEVICE	14	KICK STARTING OPERATION	30
SHIFT CAM, SHIFT FORK DEVICE	15	FUEL TANK, FUEL COCK	31
LUBRICATIO SYSTEM	16	FRONT DECORATIVE PLATE ASSY	32
INTAKE SYSTEM	17	REAR FENDER, TOOL KIT	33
EXHAUST SYSTEM	18	CUSHION	34
HAND STARTING	19	FRONT & REAR GUARD BRACKET	35
ELECTRIC STARTER	20	TAILLIGHT ASSY	36
FRAME, REAR SHOCK ABSORBER	21	ELECTRIC SYSTEM	37

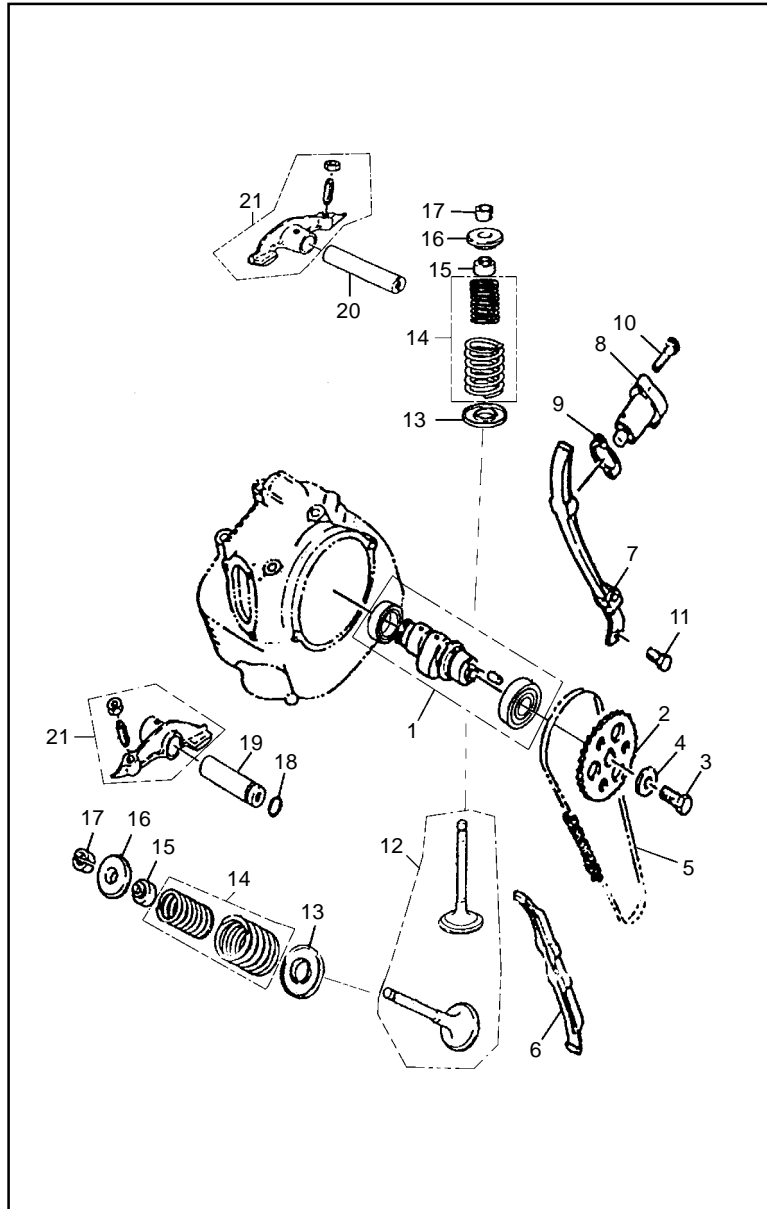


FIG. 1 PNEUMATIC MECHANISM

REF. NO.	PART NO.	DESCRIPTION	Ã ã ³Æ	Q'TY
1	11102010-000FG-000000	PNEUMATIC CAM SHAFT ASSY	ÃãÆøíÁÖÖá×e¼p	1
2	11004010-000FG-000000	TIMING SPROCKET	ÖýÊ±Á´ÁÖ	1
3	91000000-10025-578786	BOLT M10*1.25*25	ÁÝË· M10;Á1.25;Á25	1
4	11004020-000FG-000000	WASHER	μæÈ!	1
5	11300000-000FG-000000	TIMING CHAIN	ÖýÊ±Á´îö	1
6	11400000-000FG-000000	LOWER GUIDE PLATE	ÏÃμ¼Áî°ã	1
7	11500000-000FG-000000	UPPER GUIDE PLATE ASSY	ËÏμ¼Áî°ã×Û³Ë	1
8	11200000-000FG-000000	CHAIN TENSIONER	ÁîöÖÁ½×e±	1
9	11008010-000FG-000000	SHIM OF TENSIONER	ÖÁ½×e±μæE±	1
10	91000000-06025-095026	BOLT 95026-06025	ÁÝË·	2
11	91000000-06014-027694	BOLT 95026-06014	ÁÝË·	2
12	11103030-000FG-000000	AIR VALVE	ÆpÃÃ	1
13	11104010-000FG-000000	VALVE SPRING SEAT	ÆøÃÃμ´»É×ù	2
14	11107010-000FG-000000	VALVE SPRING	ÆøÃÃμ´»É	2
15	11120000-000FG-000000	VALVE STEM OIL SEAL	ÆøÃÃ,ËÖÍ·ã	2
16	11103010-000FG-000000	VALVE SPRIG COVER	ÆøÃÃμ´»ÉÇ	2
17	11103020-000FG-000000	VALVE LOCK CLIP	ÆÃÃÆ±Ð	4
18	11106010-000FG-000000	O-RING	ÖÐÏÈ!	1
19	11100020-000FG-000000	ROCKER ARM SHAFT 2	Öì±ÛÖá2	1
20	11100010-000FG-000000	ROCKER ARM SHAFT 1	Öì±ÛÖá1	1
21	11130000-000FG-000000	VALVE ROCKER ARM ASSY	ÆøÃÃÖì±Û×e¼p	1

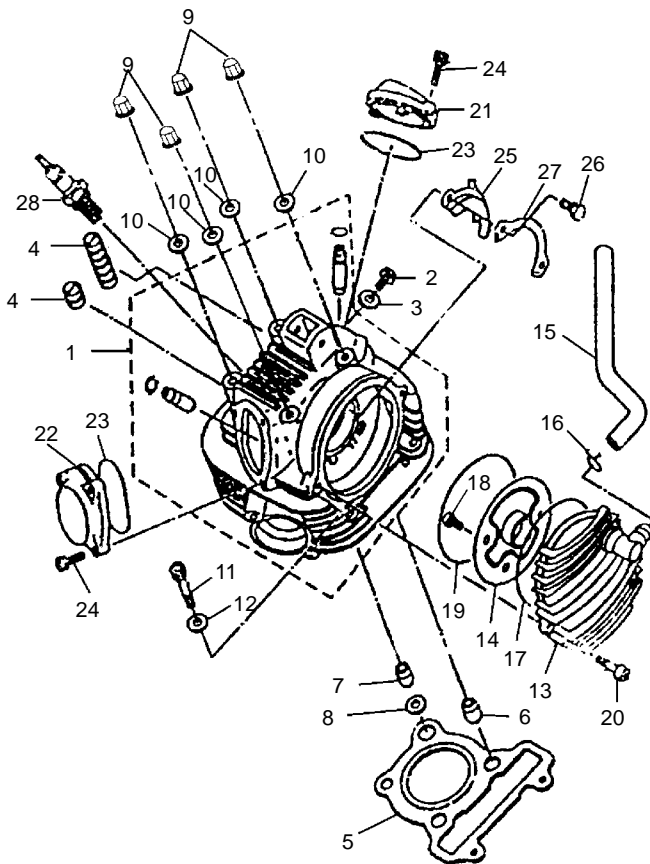


FIG. 2 CYLINDER CAP

REF. NO.	PART NO.	DESCRIPTION	Ãû ³Æ	Q'TY
1	11110000-000FG-000000	CYLINDER CAP UNIT	Æø,×,Ç×é°Ī	1
2	91000000-06010-095026	BOLT 95026-06010	ÂÝË°95026-06010	1
3	11004050-000FG-000000	WASHER	µæÈ!	1
4	11006040-000FG-000000	DAMPER	¼öÖð¿é	8
5	11010000-000FG-000000	CYLINDER CAP SHIM UNIT	Æø,×,ÇµæÆ→×é°Ī	1
6	91000000-14016-099510	ALIGNMENT PIN 99510-14016	¶ĪĪ»Īú 99510-14016	2
7	11000020-000FG-000000	ALIGNMENT PIN	¶ĪĪ»Īú	1
8	11006030-000FG-000000	OIL SEAL	ÓÍ·â	1
9	11010000-00ZA1-000000	CAP NUT	,ÇĐĪÂÝÄ,	4
10	11004040-00ZA1-000000	WASHER	µæÈ!	4
11	91000000-08045-007085	SCREW M8*45-10.9	ÂÝ¶M8;Á45-10.9	2
12	91000000-08000-084885	WASHER 8	µæÈ!8	2
13	11030000-000FG-000000	SPROCKET CHAMBER COVER UNIT	Á'ÂÖÈÖ,Ç×é°Ī	1
14	11020000-000FG-000000	OIL BAFFLE UNIT	µ²ÓÍÂĪ×é°Ī	1
15	11006060-000FG-000000	AIR DRAIN	Í'Æø¹Ü	1
16	11007010-000FG-000000	HOOP	¿ĪĪ!	1
17	11006020-000FG-000000	O-RING	ÖĐĪÈ!	1
18	91000000-06012-098512	SCREW 98512-06012	ÂÝ¶M98512-06012	2
19	11006050-000FG-000000	O-RING	ÖĐĪÈ!	1
20	91000000-06020-098512	SCREW 98512-06020	ÂÝ¶M98512-06020	2
21	11002020-000FG-000000	UPPER VALVE COVER	ÉĪÆøÄÄ,Ç	1
22	11002010-000FG-000000	LOWER VALVE COVER	ĪÄÆøÄÄ,Ç	1
23	11006010-000FG-000000	O-RING	ÖĐĪÈ!	2
24	91000000-06018-007085	SCREW M6*18-10.9	ÂÝ¶M6;Á18-10.9	5

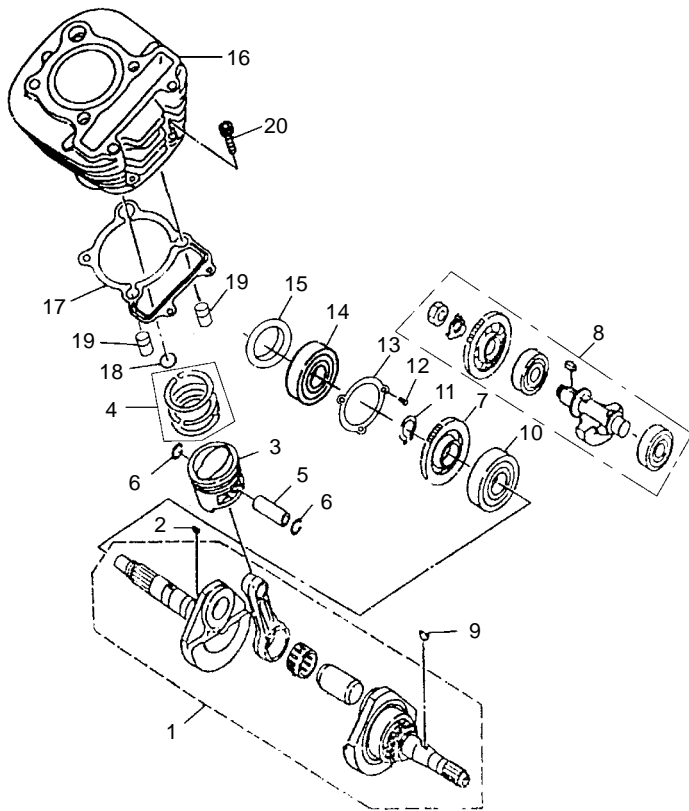


FIG. 3 CRANK CONNECTING ROD MECHANISM

REF. NO.	PART NO.	DESCRIPTION	Ãû ³Æ	Q'TY
1	12100000-000FG-000000	CRANK CONNECTING ROD ASSY	ÇúÖáÁ-Ë×Ü³É	1
2	91000000-03013-109979	WOODRUFF KEY 3*5*13	°ëÔ²¼ü 3;Á5;Á13	1
3	12202010-000FG-000000	PISTON	»îÈû	1
4	12200010-000FG-000000	PISTON RING ASSY	»îÈû»·×é¼þ	1
5	12000010-000FG-000000	PISTON PIN	»îÈûÍú	1
6	12007010-000FG-000000	CIRCLIP	µ²È!	2
7	12003030-000FG-000000	BLANCE SHAFT DRIVING GEAR	Æ½²áÖáÇÿŦ³ÝÁÖ	1
8	13003010-000FG-000000	BLANCE SHAFT ASSY	Æ½²áÖá×é¼þ	1
9	12000020-000FG-000000	WOODRUFF KEY	°ëÔ²¼ü	1
10	91000000-06306-027694	BEARING 6306/c4	Öá³Ð6306/c4	1
11	91000000-26000-089496	CIRCLIP 26	µ²È!26	1
12	91000000-06018-081985	SCREW M6*18	ÂÝŦµM6;Á18	3
13	12004010-000FG-000000	PRESSURE PLATE	Ñ¹°â	1
14	91000000-06203-027694	BEARING 6203	Öá³Ð6203	1
15	12020000-000FG-000000	OIL SEAR	Óí·â	1
16	12010000-000FG-000000	CYLINDER UNIT	Æû,×îá×é°Í	1
17	12008010-000FG-000000	CYLINDER SHIM	Æû,×îáµæÆŦ	1
18	12006010-000FG-000000	O-RING	ODÍÈ!	1
19	91000000-14016-099530	ALIGNMENT PIN 99530-14016	Ŧ¹Í»Íú99530-14016	2
20	91000000-06025-007085	SCREW M6*25-10.9	ÂÝŦµM6;Á25-10.9	2

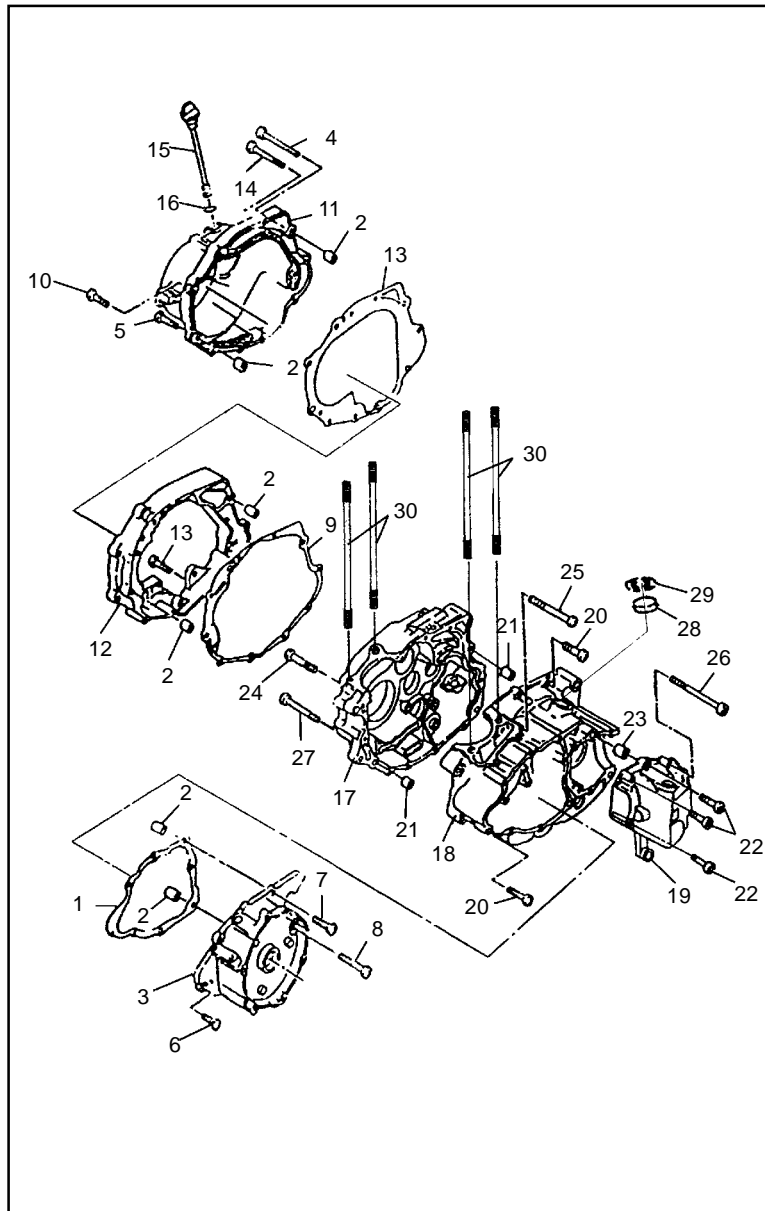


FIG. 4 CRANKCASE BODY PART

REF. NO.	PART NO.	DESCRIPTION	Ã¸ ÑÆ	Q'TY
1	13008010-000FG-000000	LEFT CRANKCASE COVER GASKET	×óÇúÖáĭã,ÇÃÛ·âµæ	1
2	91000000-12016-99530	PIN 99530-12016	Īú99530-12016	8
3	13002010-000FG-000000	LEFT CRANKCASE COVER	×óÇúÖáĭã,Ç	1
4	91000000-06080-098512	SCREW 98512-06080	ÂÝ¶98512-06080	1
5	91000000-06030-098512	SCREW 98512-06030	ÂÝ¶98512-06030	1
6	91000000-06025-098512	SCREW 98512-06025	ÂÝ¶98512-06025	5
7	91000000-06050-098512	SCREW 98512-06050	ÂÝ¶98512-06050	1
8	91000000-06060-098512	SCREW 98512-06060	ÂÝ¶98512-06060	1
9	13008020-000FG-000000	RIGHT CONNECTING CASE GASKET	ÓÒÁ-½ÓĭãÃÛ·âµæ	1
10	91000000-06040-098512	SCREW 98512-06040	ÂÝ¶98512-06040	7
11	13400000-000FG-000000	RIGHT CRANKCASE COVER	ÓÒÇúÖáĭã,Ç	1
12	13002020-000FG-000000	RIGHT CONNECTING CASE	ÓÒÁ-½ÓÇ	1
13	13008030-000FG-000000	RIGHT CRANKCASE COVE GASKET	ÓÒÇúÖáĭã,ÇÃÛ·âµæ	1
14	91000000-06070-098512	SCREW 98512-06070	ÂÝ¶98512-06070	5
15	13010000-000FG-000000	OIL DIPSTICK	ÓĪ³ß	1
16	13006010-00ZA1-000000	O-RING	ÓÐĪÈ!	1
17	13200000-000FG-000000	RIGHT CRANKCASE ASSY	ÓÒÇúÖáĭã×Û³É	1
18	13100000-000FG-000000	LEFT CRANKCASE ASSY	×óĭ-Öáĭã×Û³É	1
19	13002030-000FG-000000	RIGHT DRIVING COVER	°ó´«¶,Ç	7
20	91000000-06030-098512	SCREW 98512-06070	ÂÝ¶98512-06070	2
21	13000010-000FG-000000	ALIGNMENT PIN O10*14	¶ĪĪ»Īú O10;Á14	5
22	91000000-06035-007085	SCREW 98512-06030	ÂÝ¶98512-06030	2
23	91000000-06060-099512	PIN 98512-06060	Īú98512-06060	1
24	91000000-06060-098512	SCREW 98512-06060	ÂÝ¶98512-06060	1

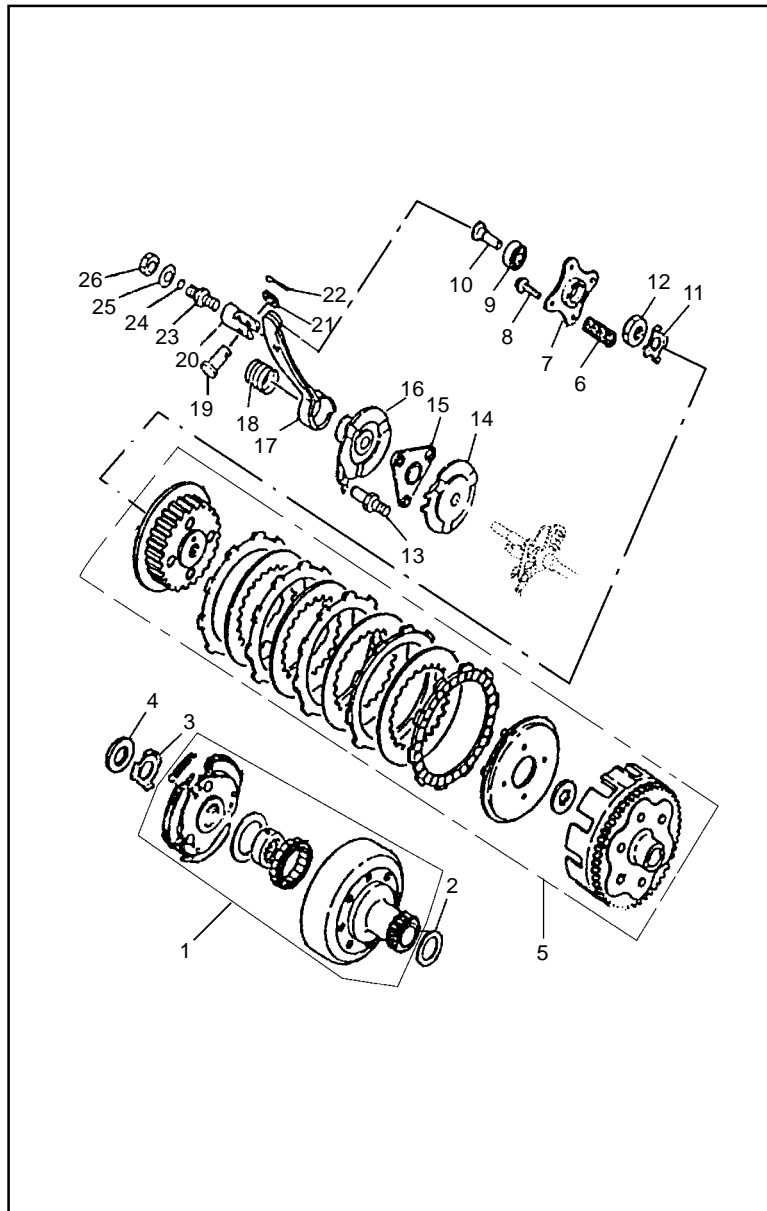


FIG. 5 CLUTCH				
REF. NO.	PART NO.	DESCRIPTION	Áû ³Æ	Q'TY
1	14110000-000FG-000000	MAIN CLUTCH ASSY	Ö÷Àè°ĪÆ÷×Ü³É	1
2	14004020-000FG-000000	WASHER	μæÈ!	1
3	14004010-000FG-000000	LOCKING WASHER	Ëø½øμæÈ!	1
4	14008540-000FG-000000	NUT	ÁÝĂ,	1
5	14210000-000FG-000000	CLUTCH ASSY	Àè°ĪÆ÷×é¼p	1
6	14207010-000FG-000000	CLUTCH SPRIG	Àè°ĪÆ÷μ~»É	4
7	14204010-000FG-000000	PRESSURE COVER	Ñ¹,Ç	1
8	14240000-000FG-000000	SCREW WITH WASHER	´øμæÁÝ¶	4
9	91000000-06000-027694	BEARING 6000	Öã³Đ6000	1
10	14003010-000FG-000000	CLUTCH POST ROD	Àè°ĪÆ÷¶¶,Ë	1
11	14004030-000FG-000000	LOCKING WASHER	Ëø½øμæÈ!	1
12	12008510-000FG-000000	NUT	ÁÝĂ,	1
13	14000010-000FG-000000	GUIDE ROD	μ¼Īð,Ë	1
14	14004040-000FG-000000	LOWER CAMP PLATE	ĪĀÍ¹ĀÖ°ã	1
15	14100000-000FG-000000	STEEL BALL BRACKET UNIT	ÖÇð¼Ü×é°Ī	1
16	14020000-000FG-000000	UPPER CAM PLATE UNIT	ÉĪÍ¹ĀÖ°ã×é°Ī	1
17	14030000-000FG-000000	PERATION ROCKER ARM UNIT	²Ü×ÝÖ;±Ü×é°Ī	1
18	14007010-000FG-000000	COMPRESSION SPRING	Ñ¹»É	1
19	14008520-000FG-000000	CONNECTING PIN 1.2*14	Á¬½ÓĪú1.2;Á14	1
20	14000020-000FG-000000	SUPPORT SEAT	Ö§³Đ×ù	1
21	91000000-08000-097851	WASHER 8	μæÈ!8	1
22	91000000-01014-009186	COTTER PIN	çª,ÚĪú	1
23	14008530-000FG-000000	ADJUSTING SCRWE	μ÷½ÚÁÝ¶	1
24	14006010-000FG-000000	O-RING	ÖĐĪÈ!	1

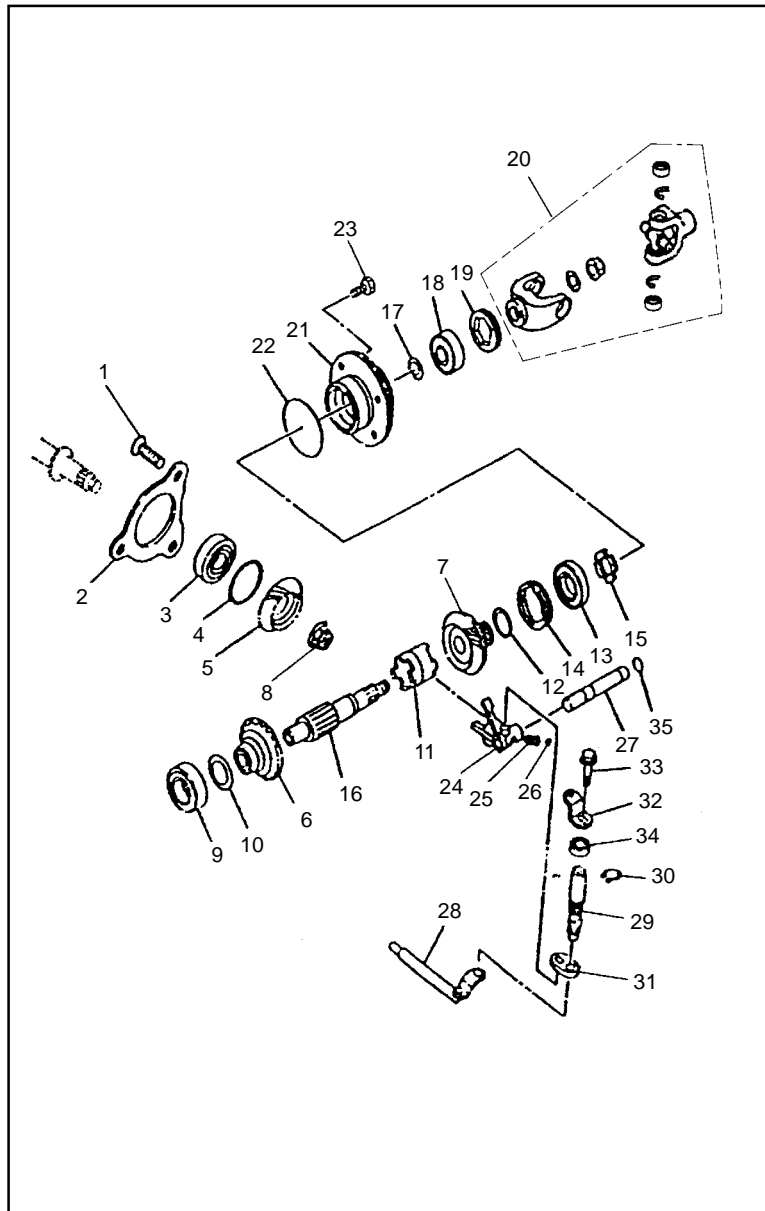


FIG. 8 ONTPUT DEVICE

REF. NO.	PART NO.	DESCRIPTION	Αύ ³Æ	Q'TY
1	91000000-08025-081985	SCREW M8*25	ΆΥ¶M8;Ά25	3
2	15004010-000FG-000000	PRESSURE PLATE	Ñ¹°ã	1
3	91000000-06304-027694	BEARING 6304	Öã³Ð6304	1
4	15004090-000FG-000000	WASHER	μæÈ!	1
5	15003040-000FG-000000	FIND GEAR	Êä³ö³ÝÄÖ	1
6	15810000-000FG-000000	FORWARD GEAR UNIT	Öýμ³ÝÄÖ×é°Ī	1
7	15833010-000FG-000000	REVERSE GEAT	μ¹μ³ÝÄÖ	1
8	15008510-000FG-000000	NUT	ΆÝÄ,	1
9	91000000-06006-027694	BEARING 6006	Öã³Ð6006	1
10	15804070-000FG-000000	WASHER	μæÈ!	1
11	15803020-000FG-000000	CONNECTING PAW	Ά-½Ö×!	1
12	15804040-000FG-000000	WASHER	μæÈ!	1
13	15840000-000FG-000000	BEARING	Öã³Ð	1
14	15838510-000FG-000000	NUT SLEEVE	ΆÝĪ×	1
15	15838520-000FG-000000	SHAPED LEFT HARDED	ÒĪĐĪ×óĐýΆÝÄ,	1
16	15803010-000FG-000000	OUTPUT SHAFT	Êä³öÖá	1
17	15804040-000FG-000000	WASHER	μæÈ!	1
18	15850000-000FG-000000	BEARING	Öã³Ð	1
19	15808510-000FG-000000	INTERNAL HEXAGONAL NUT	ΆÚÄü-½ΆÝĪ×	1
20	15803030-000FG-000000	CROSS JOINT ASSY.	ĪðĪð½Ö×é¼þ	1
21	15832010-000FG-000000	REAR COVER	°ó, Ç	4
22	15836010-000FG-000000	O-RING	ΟΔĪÈ!	1
23	91000000-08025-578786	BOLT M8*25	ΆÝÈ·M8;Ά25	1
24	15003050-000FG-000000	REVERSE SHIFT FORK	μ¹μ²!²æ	1

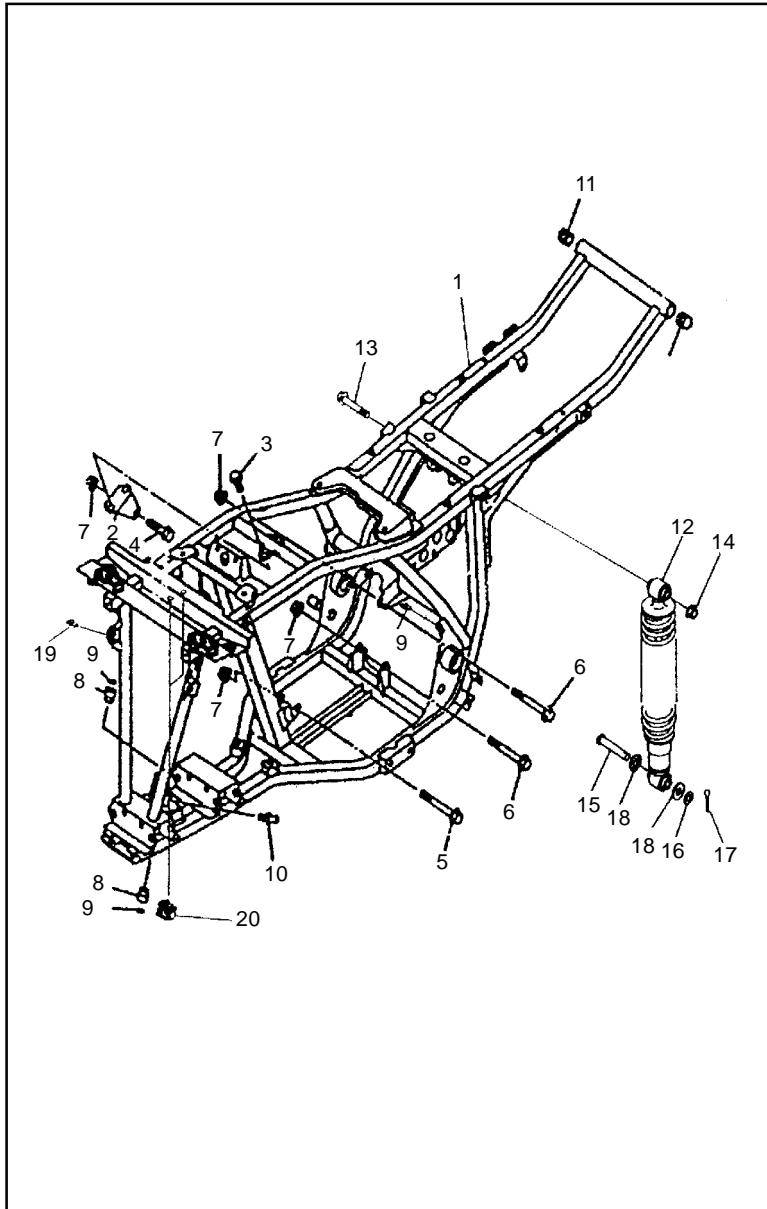


FIG. 16 FRAME, REAR SHOCK ABSORBER				
REF. NO.	PART NO.	DESCRIPTION	Ãû ³Æ	Q'TY
1	50101000-250ST-000000	FRAME	³µ¼Ü	1
2	50207010-250ST-000000	CONNECTIO PLATE COMBINATION ON ENGINE	·ç¶Γ »úÉÍÁ-½Ó°ã×é°Í	1
3	95101010-08016-578786	BOLT M8*16	ÂÝË·M8;Á16	2
4	95101020-08055-578786	BOLT M8*55	ÂÝË·M8;Á55	1
5	95101030-08065-578786	BOLT M8*65	ÂÝË·M8;Á65	1
6	95101040-08105-578786	BOLT M8*105	ÂÝË·M8;Á105	2
7	95101050-08000-618386	NUT M8	ÂÝÄ,M8	4
8	50207020-250ST-000000	BUSH, SOLID	³Äì×	2
9	95207010-15002-345292	O-RING 15*2.65G	ODÍÄÜ·ãÈ! 15;Á2.65G	2
10	50207030-250ST-000000	NIPPLE, GREASE	¼ÓÓí×	1
11	50207040-250ST-000000	PLASTIC PLUG OF FRAME	³µ¼ÜËÜÁÍËã	2
12	50402000-250ST-000000	REAR SHOCK ABSORBER	°ó¼ÖÖÆ-	1
13	95402010-12075-578786	BOLT M12*75	ÂÝË·M12;Á75	1
14	95402020-12000-618386	NUT M12	ÂÝÄ,M12	1
15	50402010-250ST-000000	REAR SHOCK ABSORBER PIN	°ó¼ÖÖÆ-Íú	1
16	95402030-12000-009785	WASHER 12	µæÈ!12	1
17	95402040-03024-009186	SPLIT PIN 3.2*24	ì³;ÚÍú 3.2;Á24	1
18	50402020-250ST-000000	REAR SHOCK ABSORING RUBBER PAD UNIT	°ó¼ÖÖð½°µæ×é°Í	2
19	50207050-250ST-000000	CABLE CLIP 3	Ïß¼Ð4	3
20	50207060-250ST-000000	CABLE CLIP 2	Ïß¼Ð2	2

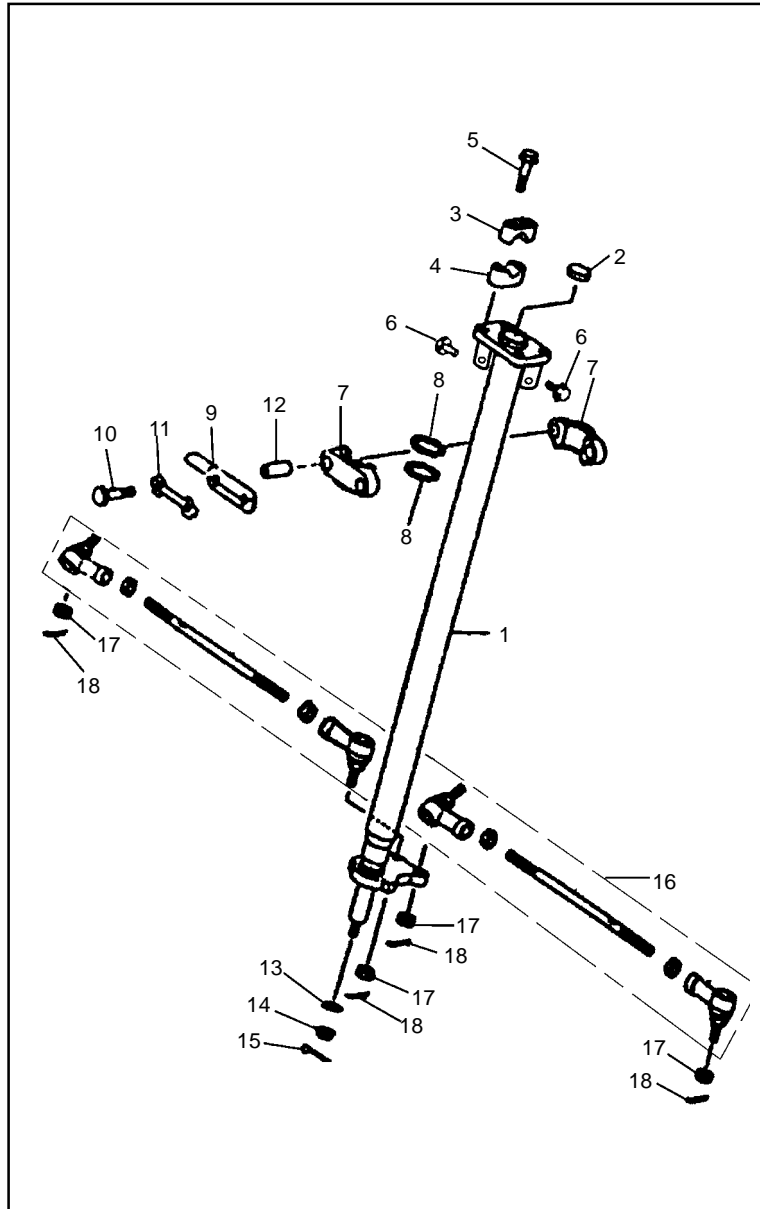


FIG. 19 STEERING VERTICAL POLE

REF. NO.	PART NO.	DESCRIPTION	Ã ³Æ	Q'TY
1	70201010-250ST-000000	STEERING UPRIGHT COLUMN WELD	×³ÏðÁçÖù°, ½Ó	1
2	70203010-250ST-000000	DUST-PROOF COVER	·À³¼, Ç	1
3	70203020-250ST-000000	UPPER GRIPPER BLOCK OF STEEARING BAR	½Ïð°ÑÉÏ¼Ð³ÖÆ-	2
4	70203030-250ST-000000	LOWE GRIP SLIPER OF STEERING BAR	½Ïð°ÑÏ¼¼Ð³Ö×ù	1
5	97203010-08050-578786	BOLT	ÂÝË°M8; Á50	2
6	97203060-06035-578786	BOLT	ÂÝË°M6; Á35	2
7	70203040-250ST-000000	GRIP SLIPPER OF STEERING UPLIGHT COLUMN	×³ÏðÁçÖù¼¼Ð³Ö×ù	2
8	70203050-250ST-000000	SEALING RIGHT	ÃÛ·ãè!	2
9	70203060-250ST-000000	WIRE CLIP UNIT	ÏB¼Ð×é°Ï	1
10	97203020-08060-578786	BOLT	ÂÝË°M8; Á60	2
11	70203070-250ST-000000	LOCKING SHIM	Ëð/ãµæÆ-	1
12	70203080-250ST-000000	BUSHING	³ÃÏ×	2
13	97203030-10000-009785	WASHER 10	µæÈ!10	1
14	97203040-10000-617986	NUT M10	ÂÝÄ, M10	1
15	97203050-02024-009186	COTTER PIN	çªç ÚÏú2.5; Á24	1
16	70202000-250ST-000000	STEERING TENSION ROD ASSY	×³ÏðÄ-, È×Û³É	1
17	97202010-12000-617986	NUT M6*1.25	ÂÝÄ, M6; Á1.25	4
18	97202020-03024-009186	COTTER PIN 3.2*24	çªç ÚÏú3.2; Á24	4

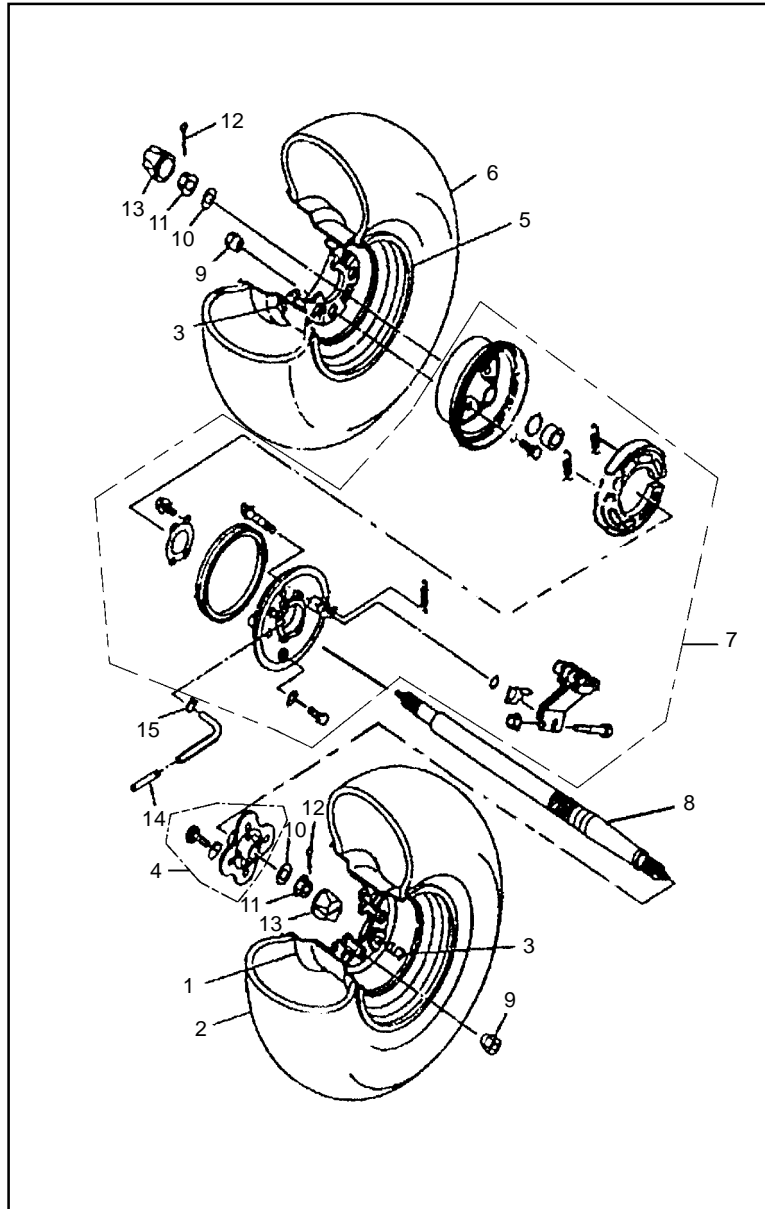


FIG. 24 REAR WHEEL SYSTEM

REF. NO.	PART NO.	DESCRIPTION	Ãû ³Æ	Q'TY
1	40401010-250ST-000000	REAR RIM UNIT (left)	°óÄÖéþ×é°İ (×ó)	1
2	40401020-250ST-000000	REAR TIRD (left)	°óÄÖİŸ (×ó)	1
3	40403010-250ST-000000	AIR DRAIN MOUTH WITHOUT TYRE TUBE	İPÄÜİŸÆøÄÄ×ì	2
4	40401030-250ST-000000	REAR WHEEL CONNECTING PLATE ASSY	°óÄÖÄ¹½Ö°â×é¼þ	1
5	40402010-250ST-000000	REAR RIM UNIT (right)	°óÄÖéþ×é°İ (ÓÒ)	1
6	40402020-250ST-000000	REAR TIRE (right)	°óÄÖİŸ (ÓÒ)	1
7	40203000-250ST-000000	REAR BRAKE ASSY	°óÖÆŸ ×é°İ	1
8	40403000-250ST-000000	REAR WHEEL AXLE	°óÄÖÖá	1
9	40403020-250ST-000000	CONNERTING NUT OF FRONT AND REAR WHEELS	Ç°°óÄÖÄ¹¼áÄÝÄ,	8
10	40403030-250ST-000000	WASHER 16	µæÈ! 16	2
11	40403040-250ST-000000	REAR WHEEL AXLE NUT M16	°óÄÖÖáÄÝÄ, M16	2
12	94403010-03030-009186	COTTER PIN 3.2*30	çªç Üİú 3.2; Á30	2
13	40403050-250ST-000000	DUST-PROOF COVER OF FRONT AND REAR WHEELS	Ç°°óÄÖ·À³¼, Ç	2
14	40203010-250ST-000000	AIR FLOW PIPE OF REAR BRAKE	°óÖÆŸ Æ÷ÍÆø¹Ü	1
15	40203020-250ST-000000	AIR FLOW PIPE CLIP OF BRAKE	ÖÆŸ Æ÷ÍÆø¹¼Ð×Ó	1
16				
17				
18				
19				
20				
21				
22				
23				
24				

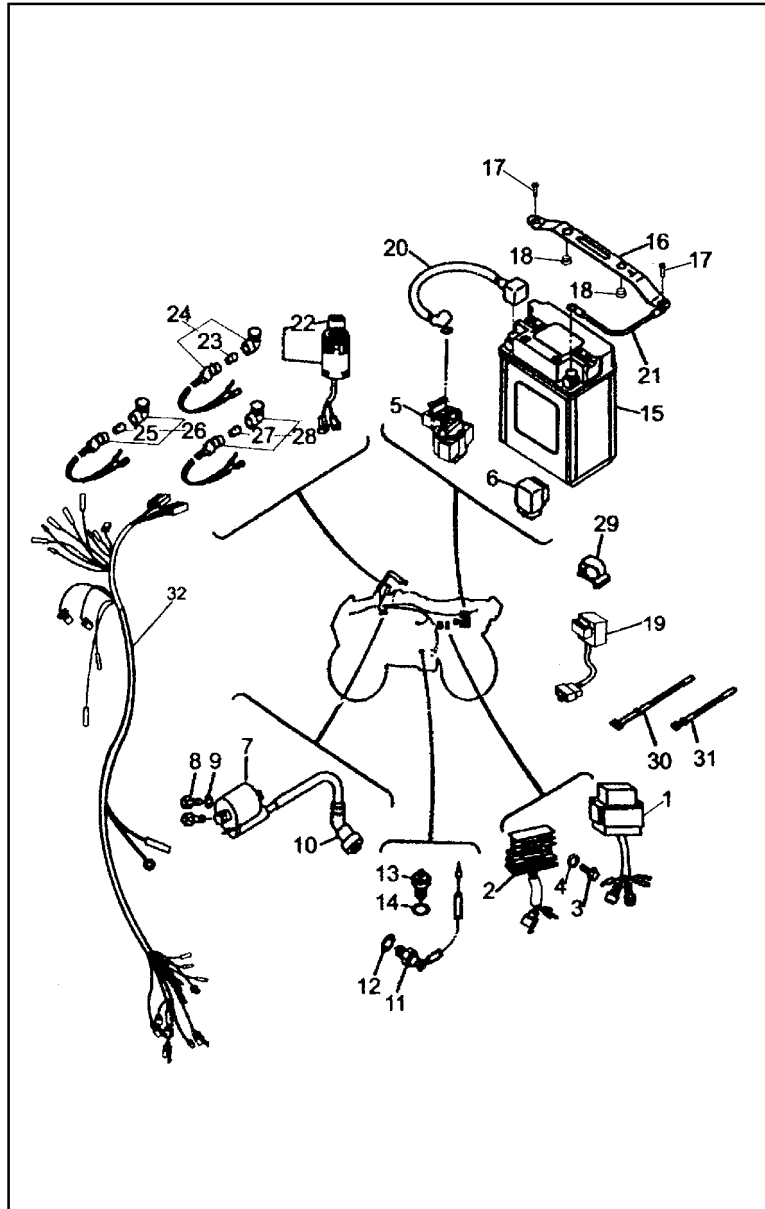


FIG. 36 ELECTRIC SYSTEM

REF. NO.	PART NO.	DESCRIPTION	Ã ù ³Æ	Q'TY
1	80601000-250ST-000000	CDI UNIT	¿É¿Ø¹è ¥·eÆ÷CDI	1
2	80602000-250ST-000000	RECTIFICATION REGULATOR	ÔÁ-µ-¿ÁÆ-	1
3	98602010-06020-578786	BOLT M6*20	ÁÝË·M6¿Á20	1
4	98602020-06000-009304	SPRING WASHER 6	µ-µæ6	1
5	80603000-250ST-000000	START RELAY	ÆØ¶¼¿µçÆ÷	1
6	80604000-250ST-000000	SHUTDOWN RELAY	ÇÐ¶¼¿µçÆ÷	1
7	80605000-250ST-000000	HIGH PRESSURE COIL ASSY	¿BÑ¹¿BÈ!×e¼p	2
8	80605010-250ST-000000	BOLT UNIT M5*16	×e°¿ÁÝË·M5¿Á16	2
9	98605010-05000-009387	SPRIG WASHER 5	µ-µæ5	1
10	80605020-250ST-000000	PROTECTING CAP	»±Á±	1
11	80606000-250ST-000000	REVERSE SWITCH	µ¹µµ¿¹Ø	1
12	80606010-250ST-000000	WASHER	µæÈ!	1
13	80607000-250ST-000000	NEUTRAL SWITCH	¿Ôµµ¿¹Ø	1
14	80607010-250ST-000000	WASHER	µæÈ!	1
15	80608000-250ST-000000	BATTERY ASSY	Ðµç³Ø×e¼p	1
16	80608010-250ST-000000	PRESSURE BLOCK OF BATTERY	Ðµç³ØÑ¹¿é	2
17	98608010-06020-578786	FLANGE BOLT M6*20	·¿¼ÁÆÁÝË·M6¿Á20	2
18	80608020-250ST-000000	BUFFER PAD OF BATTERY PRESSURE BLOCK	Ðµç³ØÑ¹¿é»³¿µæ	1
19	80609000-250ST-000000	CONTROLLER	¿ØÆÈ-	1
20	80608030-250ST-000000	BATTERY POSITIVE LEAD	Ðµç³ØÔ¿¼¿µ¼¿B	1
21	80608040-250ST-000000	EARTH WIRE ASSY	½ØµØ¿B×e°¿	1
22	80401000-250ST-000000	MAIN SWITCH LOCK	×Ü¿¹ØËø	1
23	80609010-250ST-000000	BULB 12V3W	µÆÁÝ12V3W	1
24	80109000-250ST-000000	NEUTRAL INDICATOR ASSY	¿ÔµµÔ,È³¼µÆ×e¼p	1

